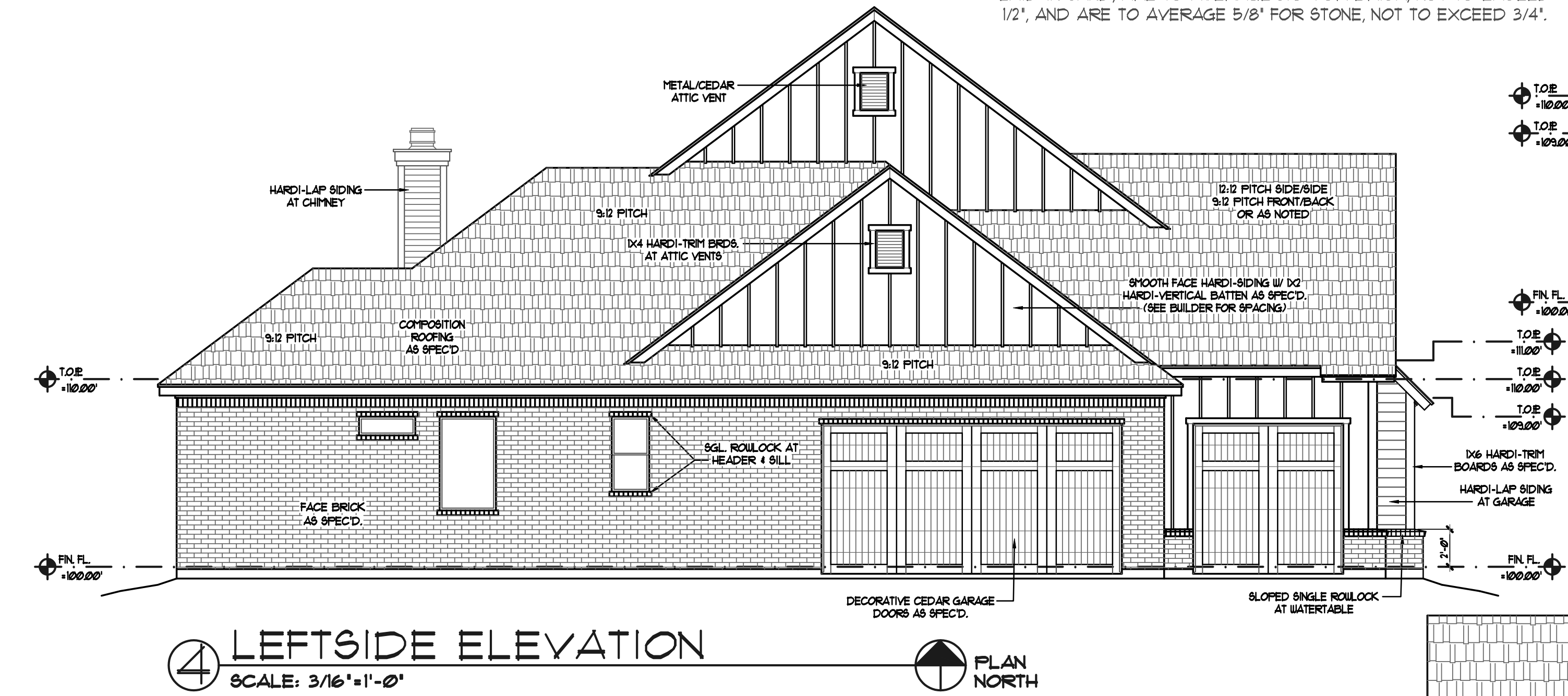
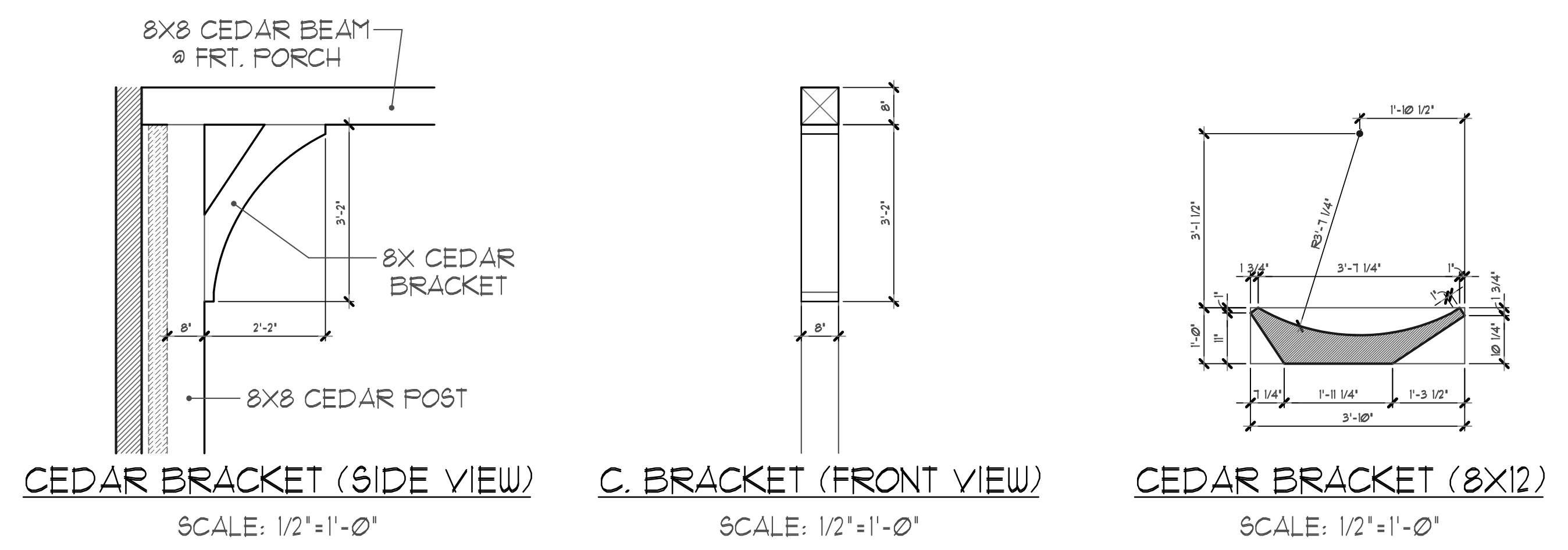
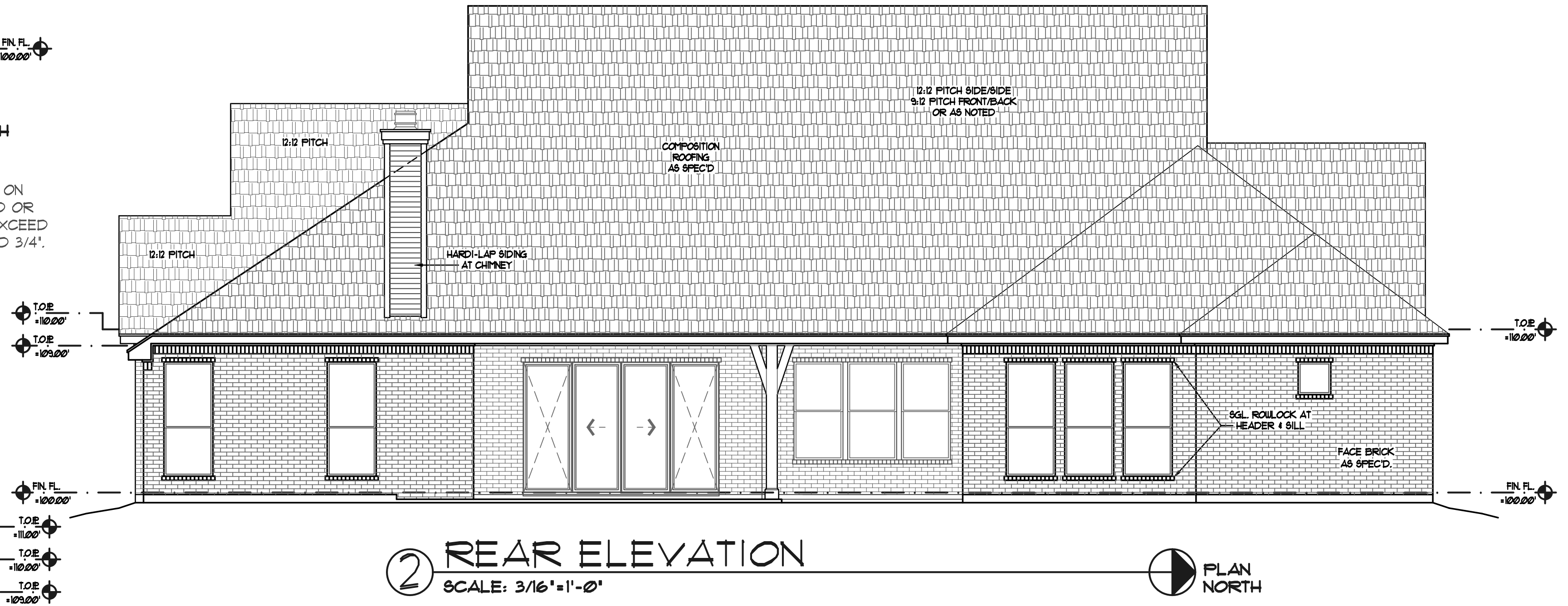


③ RIGHTSIDE ELEVATION  
 SCALE: 3/16" = 1'-0"

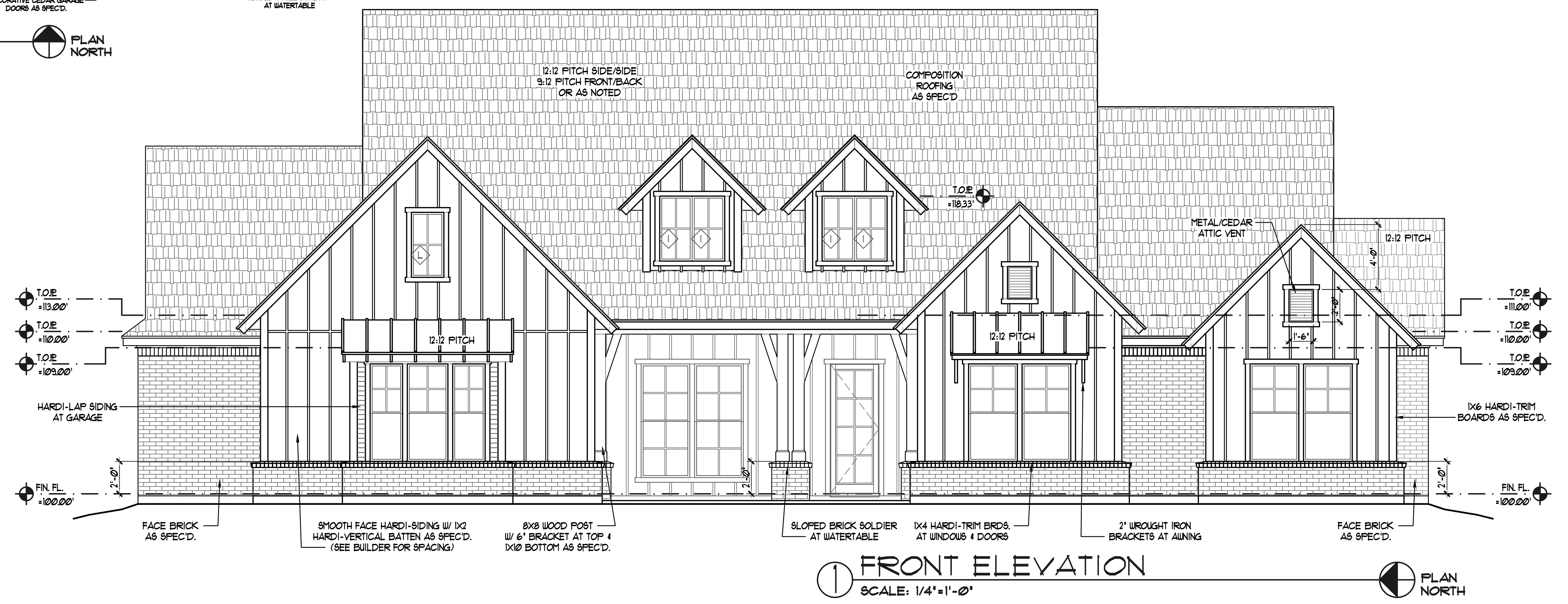
NOTE #1: ALL MORTAR JOINTS, WHETHER IN FLATWORK OR ON VERTICAL SURFACES, AND WHETHER ACTUALLY MORTARED OR LAID IN SAND, ARE TO AVERAGE 3/8" FOR BRICK, NOT TO EXCEED 1/2", AND ARE TO AVERAGE 5/8" FOR STONE, NOT TO EXCEED 3/4".



④ LEFTSIDE ELEVATION  
 SCALE: 3/16" = 1'-0"



② REAR ELEVATION  
 SCALE: 3/16" = 1'-0"



① FRONT ELEVATION  
 SCALE: 1/4" = 1'-0"

1120 STAGECOACH RANCH DRIVE  
 LOT: 21, BLOCK: 1 - STAGECOACH RANCH  
 AN ADDITION TO ETJ WEATHERFORD, PARKER COUNTY, TEXAS  
 Royal Crest Custom Homes

PROJECT:  
 Design Consultants Inc.  
 RESIDENTIAL & COMMERCIAL DESIGNERS - SPACE PLANNING  
 771 E. SOUTHLAKE BLVD. STE 213 - SOUTHLAKE, TEXAS  
 VOICE (817) 905-7374 - FAX (682) 323-3090  
 SHEET A2.0