

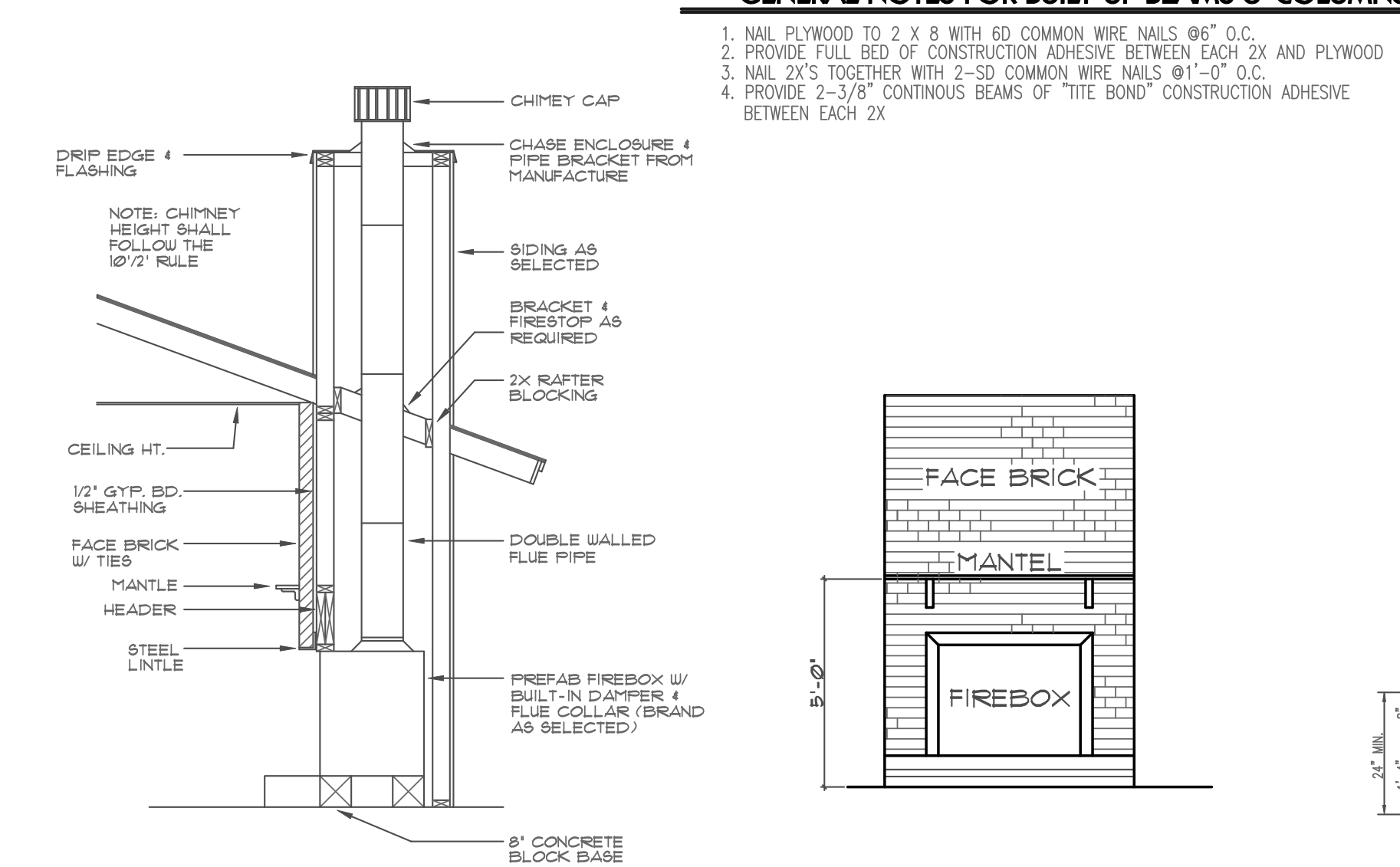
GENERAL NOTES

- SOUTHERN PINE KILN DRY TO 16% MOISTURE OR LESS. SINGLE MEMBER USE: 1,000 PSI. REPETITIVE USE: 1,400 PSI. MODULUS OF ELASTICITY: 1,600,000 PSI. BLOCKING AS REQ'D PER 2506.10 U.B.C. DEAD LOAD = 5 PSF. LIVE LOAD = 10 PSF. JOIST AND NAILED SIZE: SPAN TO 16' - 2 X 6. SPAN TO 22' - 2 X 8.
- NOTE: FIVE 36,000 PSI ALLOW FOR BEARING AT EACH END. NO SUPERIMPOSED LOADS.

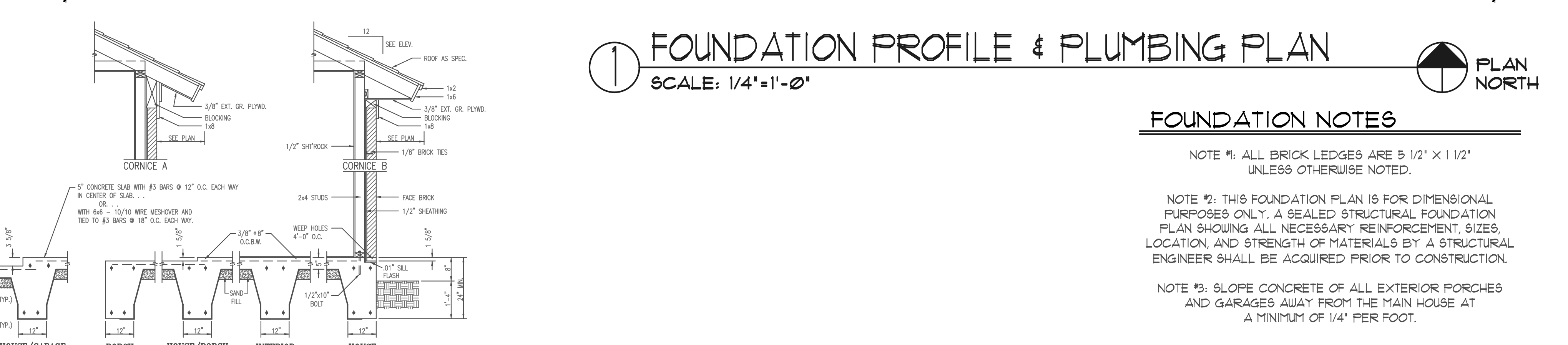
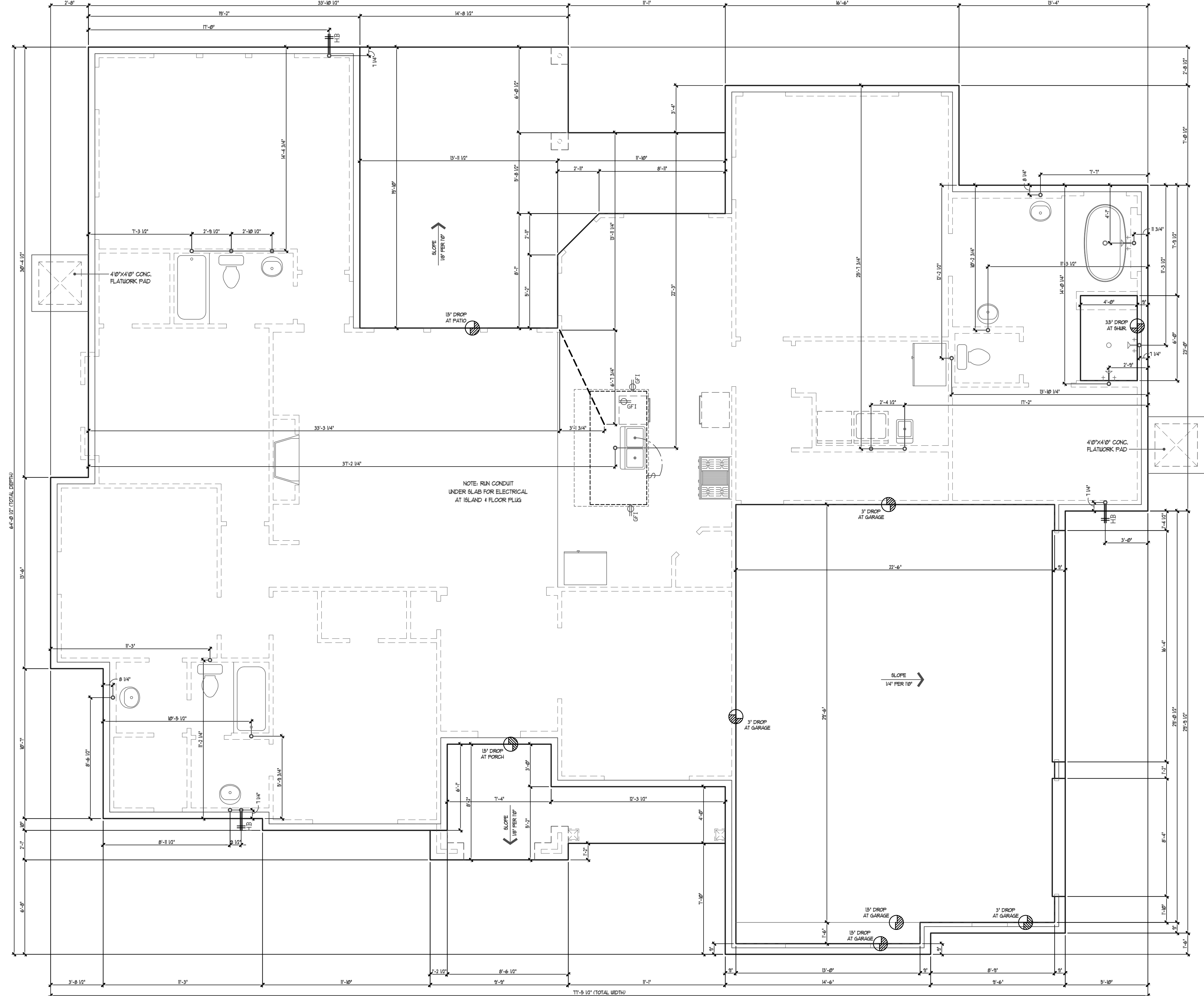
STEEL LINTEL TABLE FOR MASONRY	
SPAN	SECTION
3'-0"	2 X 8
3'-6"	2 X 8
4'-0"	2 X 10
4'-6"	2 X 10
5'-0"	2 X 12

HEADER SCHEDULE	
SPAN	SECTION
3'-0"	3 1/2"
3'-6"	3 1/2"
4'-0"	3 1/2"
4'-6"	3 1/2"
5'-0"	3 1/2"

FLITCH BEAM	
NOTE	SECTION
2-2 X 12S WITH 7/8" X 11" STEEL PLATE 4-36 SPACER	3 1/2"
1/2" BOLTS @ 16" O.C. SAGROCK TOP AND BOTTOM	3 1/2"



PREFABRICATED FIREPLACE DETAIL



WALL SECTION & FOUNDATION DETAILS

© DESIGN CONSULTANTS INC.

SCALE: 1/4" = 1'-0"
 PROJECT NO. RC2603R1.14
 DATE: 4/18/2021
 DESIGNER: MITT
 PROJECT:

1039 STAGECOACH RANCH DRIVE
 LOT: 41, BLOCK: 1 - STAGECOACH RANCH
 AN ADDITION TO ETJ WEATHERFORD, PARKER COUNTY, TEXAS
Royal Crest Custom Homes

Design Consultants Inc.
 RESIDENTIAL & COMMERCIAL DESIGNERS - SPACE PLANNING
 771 E. SOUTHLAKE BLVD. STE 213 - SOUTHLAKE, TEXAS
 VOICE (817) 905-7374 - FAX (682) 323-3090

SHEET

① FOUNDATION PROFILE & PLUMBING PLAN
 SCALE: 1/4" = 1'-0"

FOUNDATION NOTES

- NOTE #1: ALL BRICK LEDGES ARE 5 1/2" X 1 1/2" UNLESS OTHERWISE NOTED.
- NOTE #2: THIS FOUNDATION PLAN IS FOR DIMENSIONAL PURPOSES ONLY. A SEALED STRUCTURAL FOUNDATION PLAN SHOWING ALL NECESSARY REINFORCEMENT, SIZES, LOCATION, AND STRENGTH OF MATERIALS BY A STRUCTURAL ENGINEER SHALL BE ACQUIRED PRIOR TO CONSTRUCTION.
- NOTE #3: SLOPE CONCRETE OF ALL EXTERIOR PORCHES AND GARAGES AWAY FROM THE MAIN HOUSE AT A MINIMUM OF 1/4" PER FOOT.

