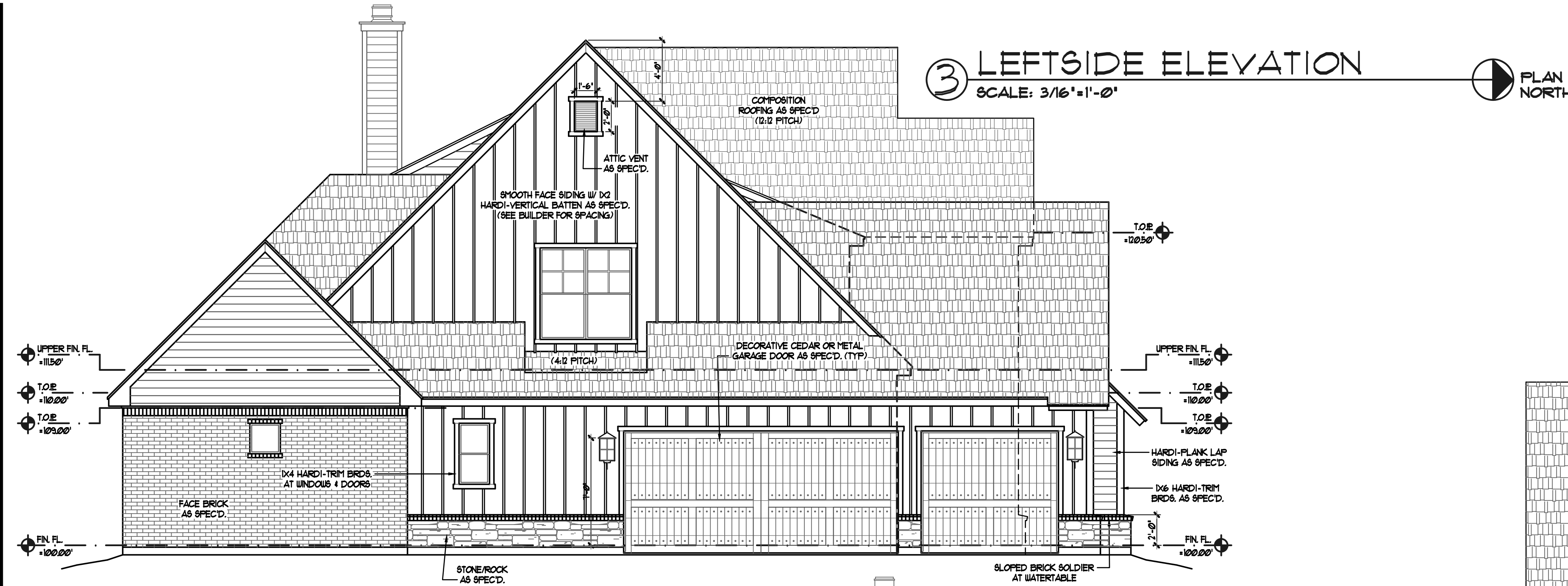
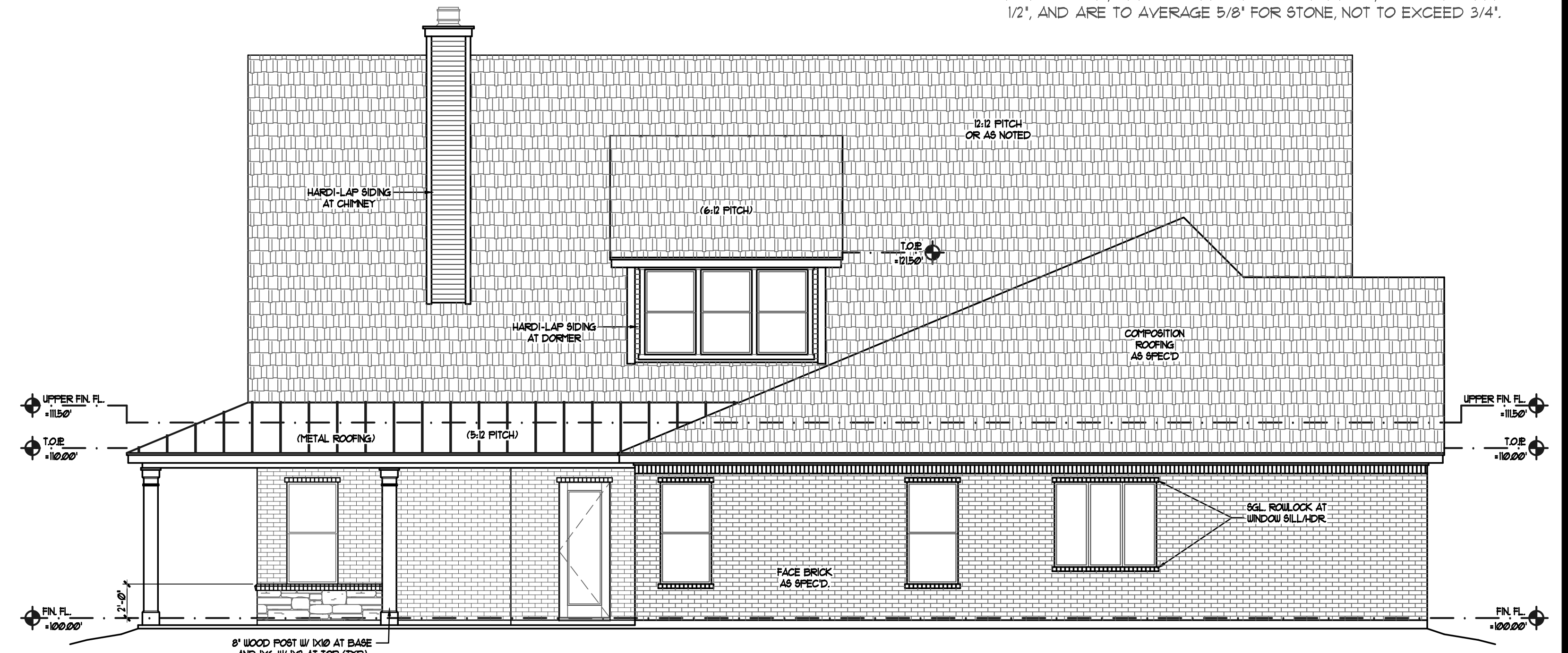


SCALE: 1/4" = 1'-0"
 PROJECT NO. RC313R
 DATE: 2/14/2020
 DESIGNER: MITT
 REVISION: #1-X/1/20XX



③ LEFTSIDE ELEVATION
 SCALE: 3/16" = 1'-0"



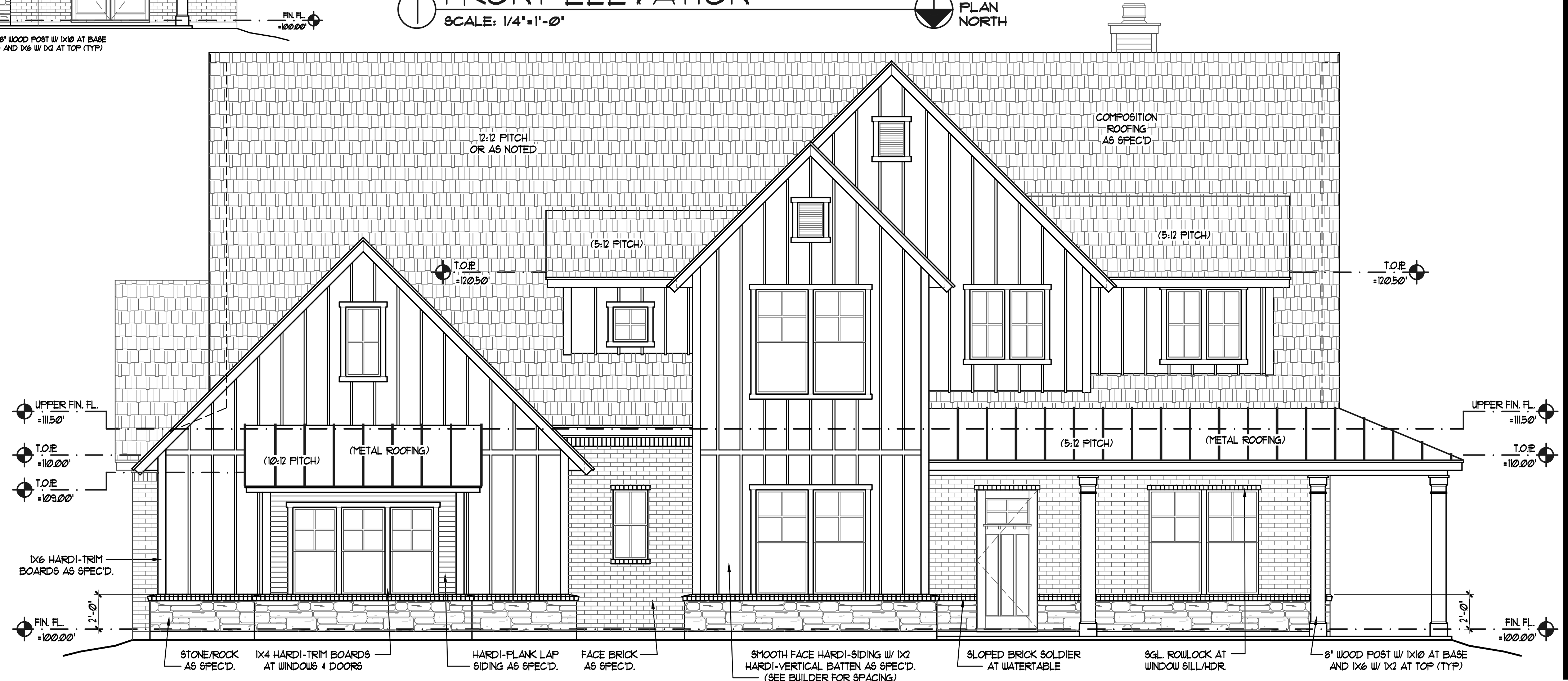
② REAR ELEVATION
 SCALE: 3/16" = 1'-0"



④ RIGHTSIDE ELEVATION
 SCALE: 3/16" = 1'-0"



① FRONT ELEVATION
 SCALE: 1/4" = 1'-0"



NOTE #1: ALL MORTAR JOINTS, WHETHER IN FLATWORK OR ON VERTICAL SURFACES, AND WHETHER ACTUALLY MORTARED OR LAID IN SAND, ARE TO AVERAGE 3/8" FOR BRICK, NOT TO EXCEED 1/2", AND ARE TO AVERAGE 5/8" FOR STONE, NOT TO EXCEED 3/4".

1036 STAGECOACH RANCH DRIVE
 LOT: 3, BLOCK: 1 - STAGECOACH RANCH ADDITION
 AN ADDITION TO ETJ WEATHERFORD, PARKER COUNTY, TEXAS
 Royal Crest Custom Homes

PROJECT:
 Design Consultants Inc.
 RESIDENTIAL & COMMERCIAL DESIGNERS - SPACE PLANNING
 771 E. SOUTHLAKE BLVD. STE 213 - SOUTHLAKE, TEXAS
 VOICE (817) 905-7374 - FAX (682) 323-3090

SHEET
 A3.0