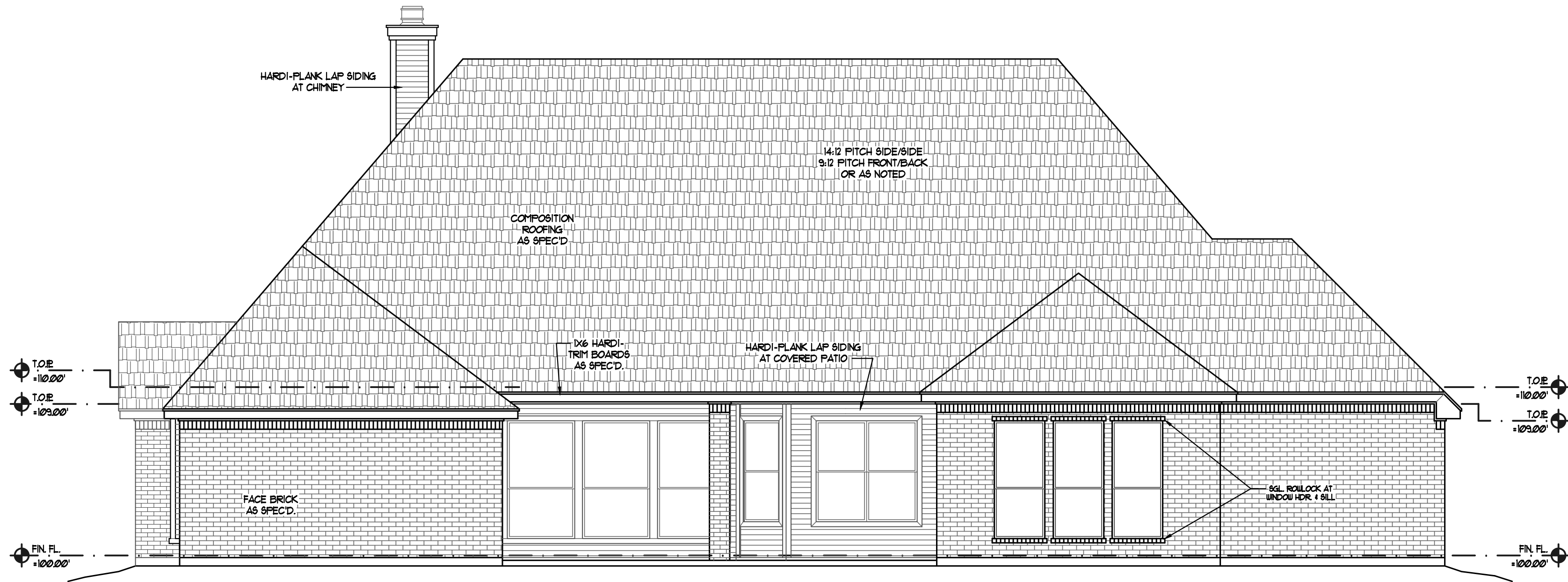
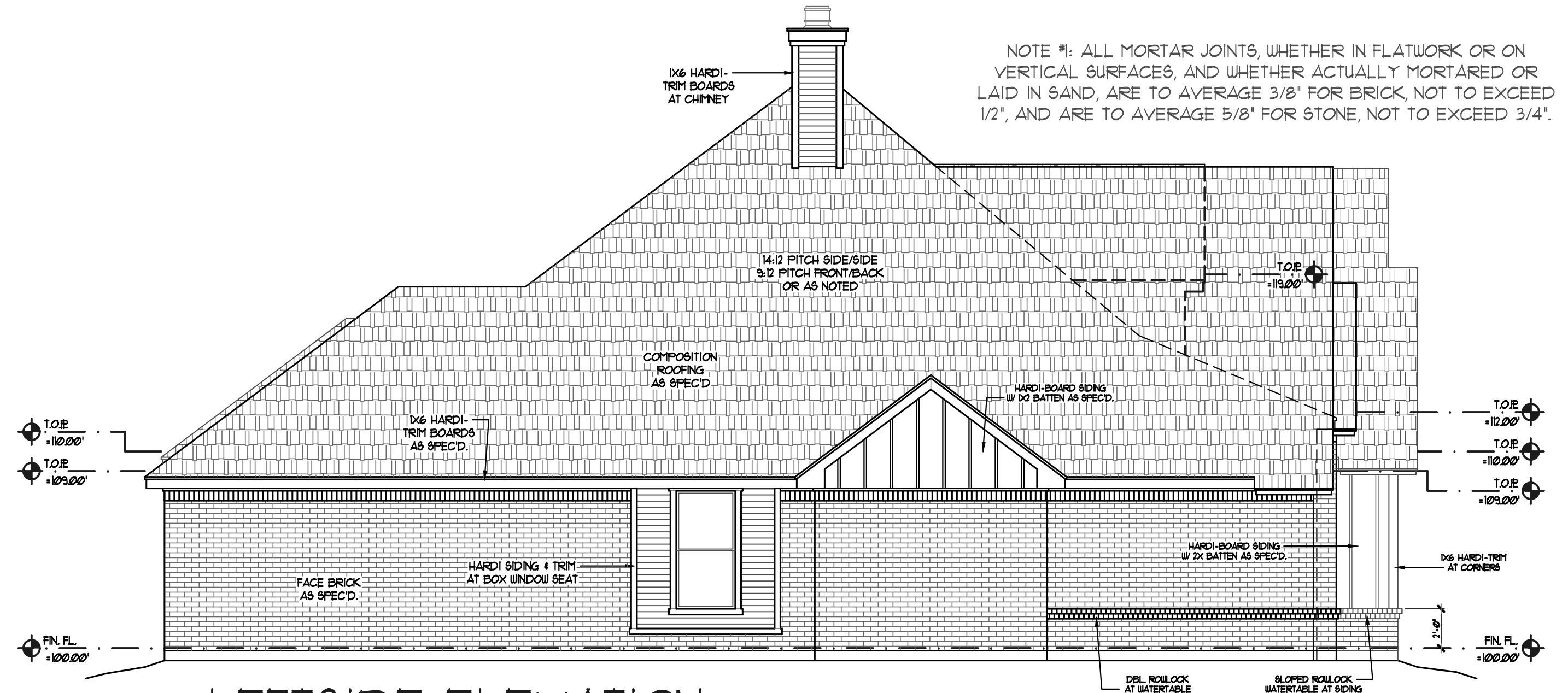


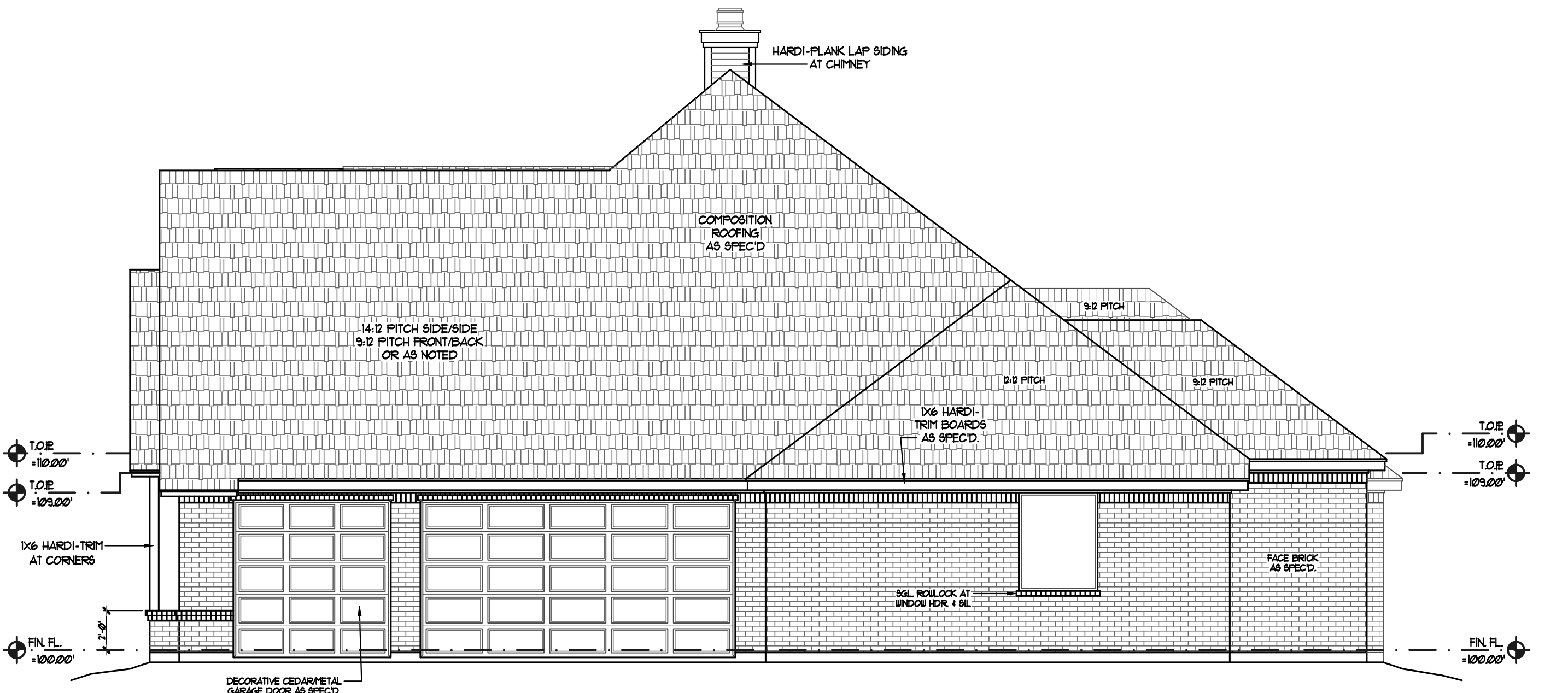
NOTE #1: ALL MORTAR JOINTS, WHETHER IN FLATWORK OR ON VERTICAL SURFACES, AND WHETHER ACTUALLY MORTARED OR LAID IN SAND, ARE TO AVERAGE 3/8" FOR BRICK, NOT TO EXCEED 1/2", AND ARE TO AVERAGE 5/8" FOR STONE, NOT TO EXCEED 3/4".



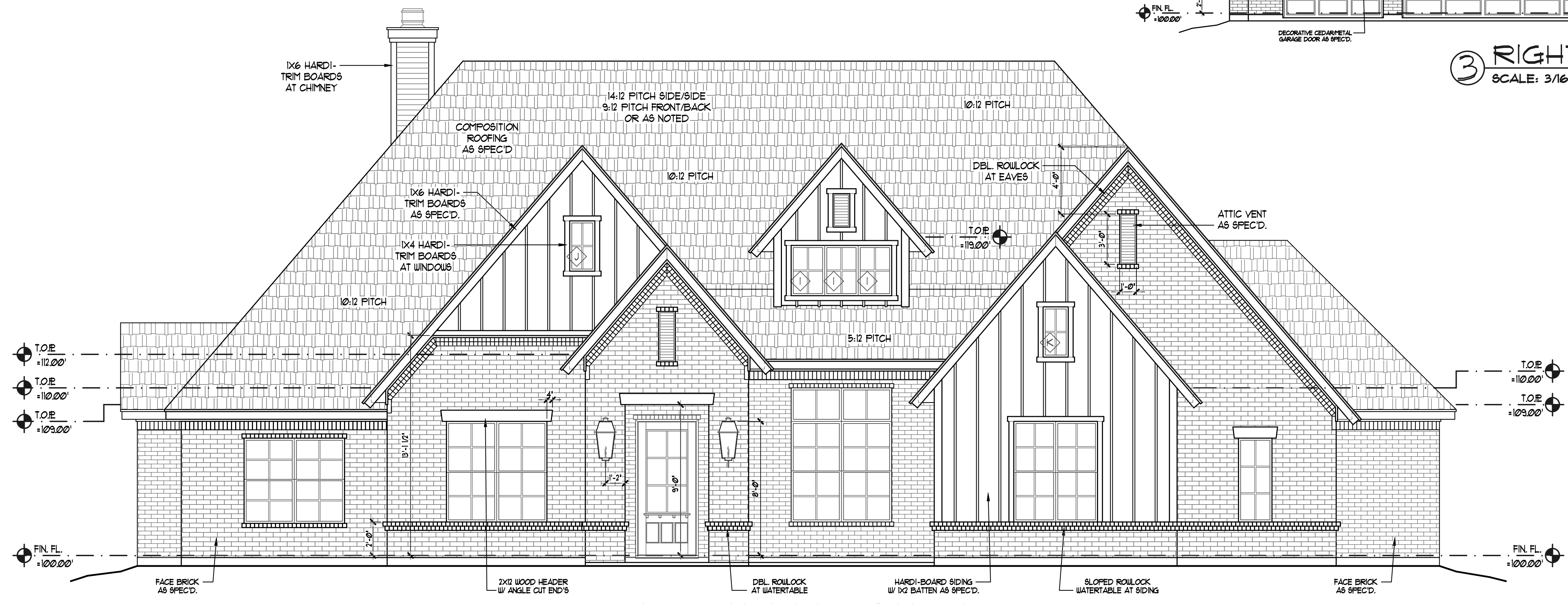
② REAR ELEVATION  
 SCALE: 3/16" = 1'-0"



④ LEFTSIDE ELEVATION  
 SCALE: 3/16" = 1'-0"



③ RIGHTSIDE ELEVATION  
 SCALE: 3/16" = 1'-0"



① FRONT ELEVATION  
 SCALE: 1/4" = 1'-0"

